

A background network diagram consisting of numerous nodes (colored red, blue, yellow, green, and purple) connected by thin grey lines, forming a complex web of clusters and connections.

Kia Ora

The Network for Engagement And Research

Sander Paul Zwanenburg
Lecturer in Information Science

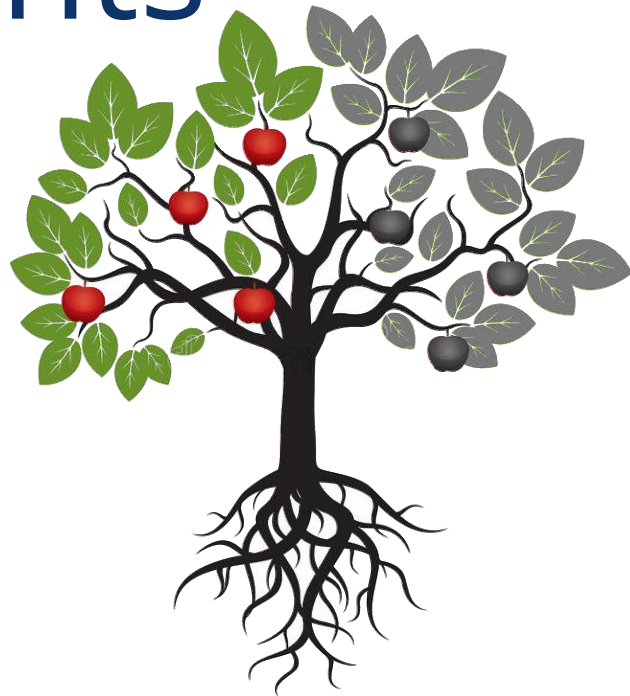


UNIVERSITY
of
OTAGO
Te Whare Wānanga o Ōtāgo
NEW ZEALAND

Acknowledgments

Brian Spisak
Caitlin Owen
Lahiru Ariyasinghe
Lincoln Wood
Peter Whigham
John Williams
Michael Light
Dave Maclaurin
Gary Niemi
Peter Luthar
Gavin Bainbridge
Mike Conroy
Terry Wilson

Donna Hendry
John Milnes
Martin Gagnon
Geoffrey Hughes
Kim Connelly
Christian Macfarlane
Karen Hogg
David Evers
Lorraine Harris
Hilary Phipps
Holger Regenbrecht
Shiobhan Smith
Dene McDonald

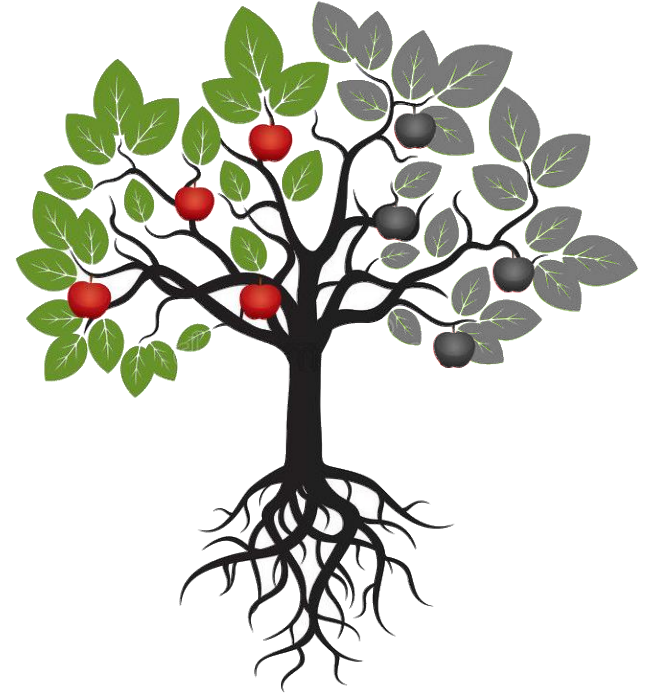


NEAR

The Network For Engagement And Research is an information system in development.

It collects and integrates data on the expertise of staff and their collaboration.

It aims to provide valuable applications to a variety of stakeholders.



Field of NEAR

Staff

- Academic
- University wide

Expertise

- Their fields of work
- Their aspects of work
- Their output of work

Collaboration

- Academic
- Internal & External



Source Data of NEAR

Source	Data
Active Directory	Phonebook type data
Research Output Database	Basic output data
Scopus & Web of Science	Publication data
REDS	Grant contract data
Media Expertise Database	Expertise and contact data
Users of NEAR	Custom expertise and collaboration data, privacy data
...	



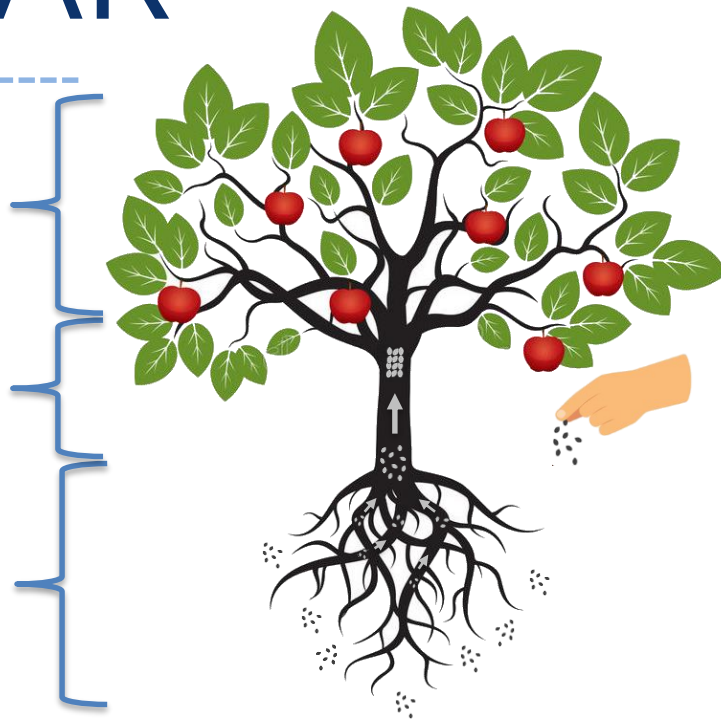
Process of NEAR

Current: interactive visualisation
using visNetwork and Shiny Server Pro,
Later: D3.js

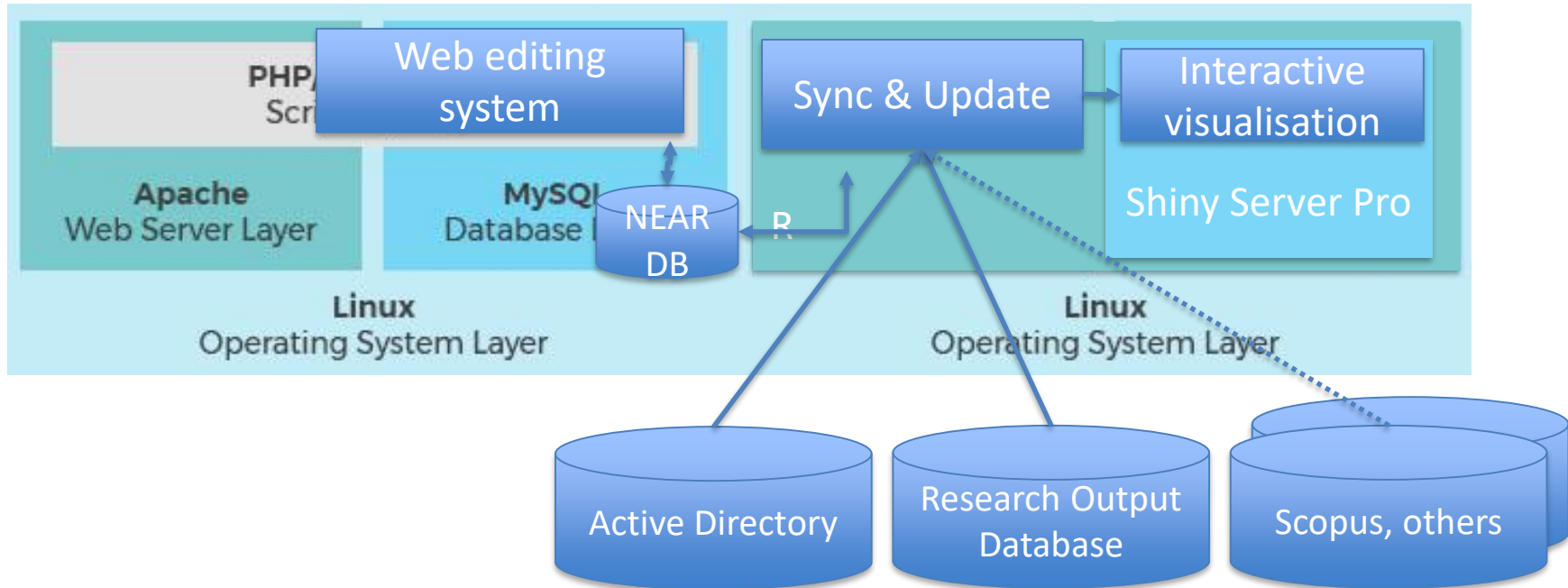
Integrate, summarize
Daily updates through R

Extract, Transform, Load: various APIs,
custom code, mostly in R

User input: LAMP stack with carefully
designed interface



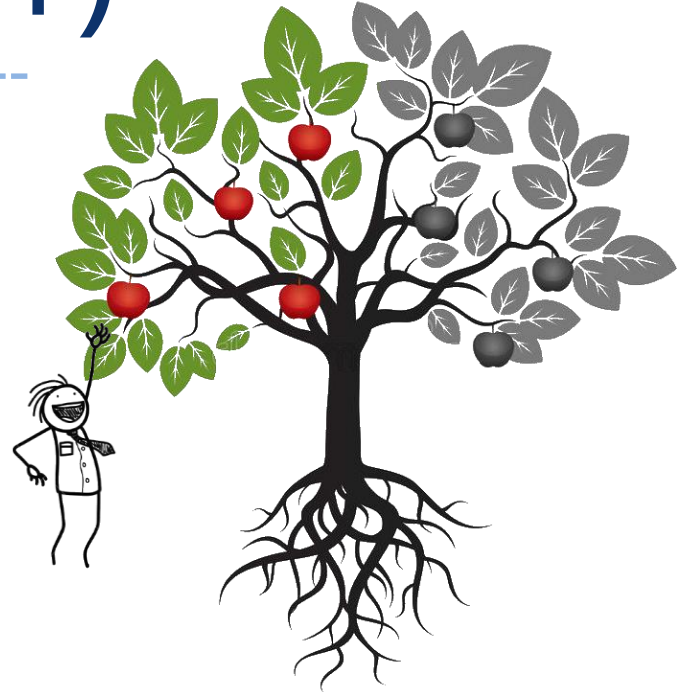
Structure of NEAR



Fruit of NEAR (1)

Finding expertise and connections:

- Prospective students finding topics, supervisors
- Supervisors finding co-supervisors
- PIs finding AIs
- Researchers finding reviewers
- Lecturers finding guest lecturers
- Staff finding engagement opportunities



Network for Engagement And Research, Otago Business School

NEAR: Last updated 12 February 2020

[My Profile](#)

[Help](#)

[Email all Highlighted Staff](#)

Show OBS Department:

All Departments

Highlight University of Otago Staff:

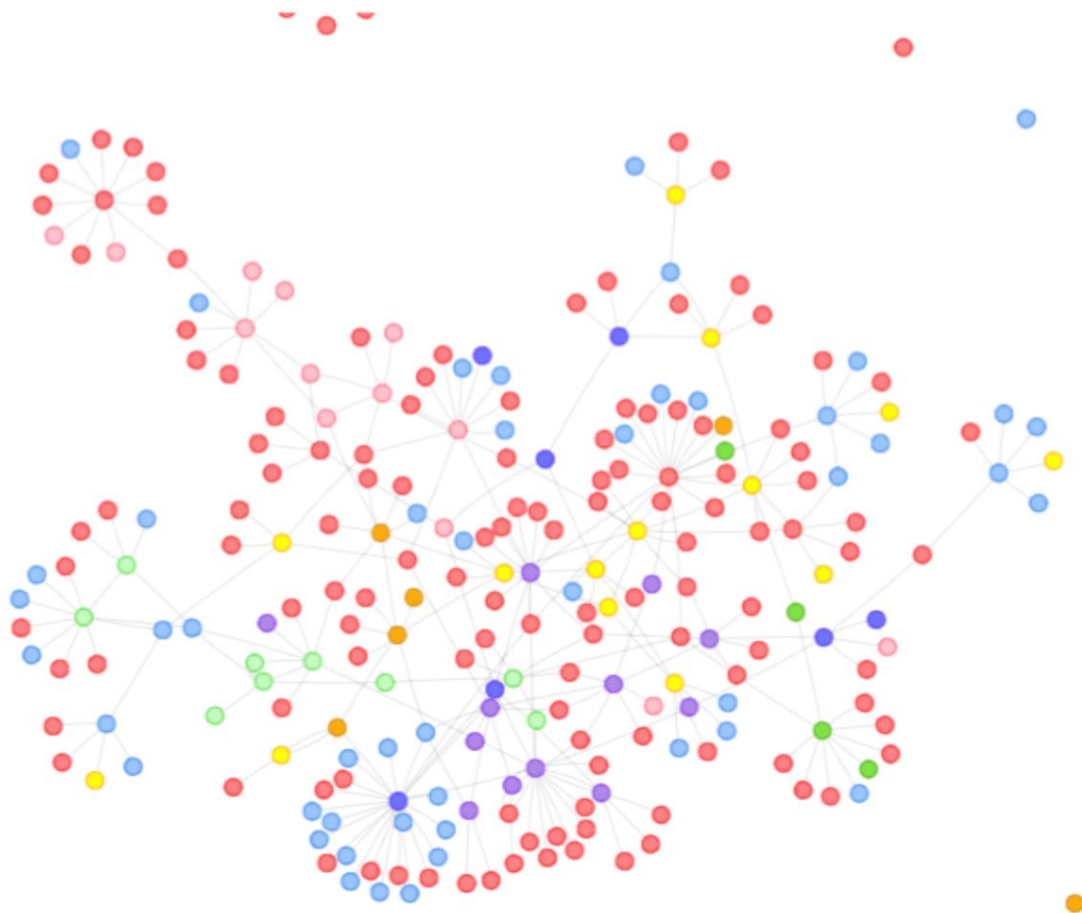
Highlight External Parties:

Highlight Fields of Research:

Highlight Custom Research Keywords:

Highlight Research Methods:

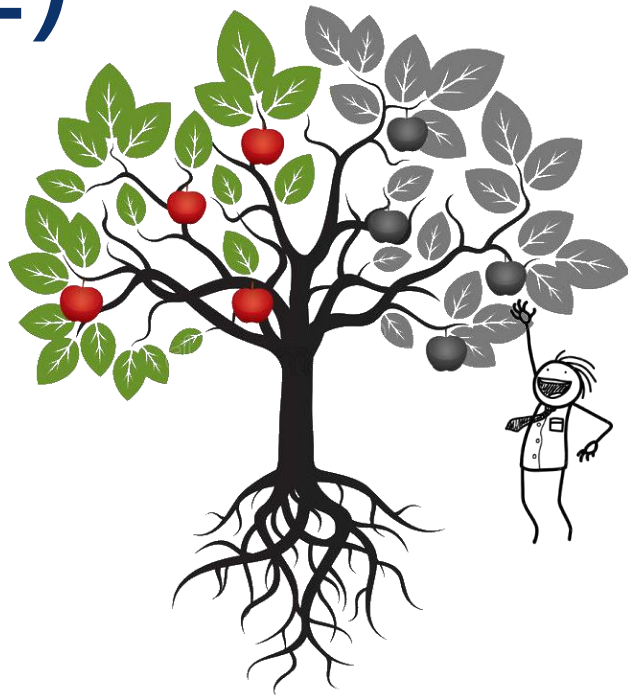
Highlight Sustainable Development Goals:



Fruit of NEAR (2)

Enabling Research on Research

- How do we work?
- Who works with whom?
- Where are our growth areas?
- Where are there future opportunities?
- What makes for prolific collaborations?
- Can we tackle interdisciplinary problems?
- ...



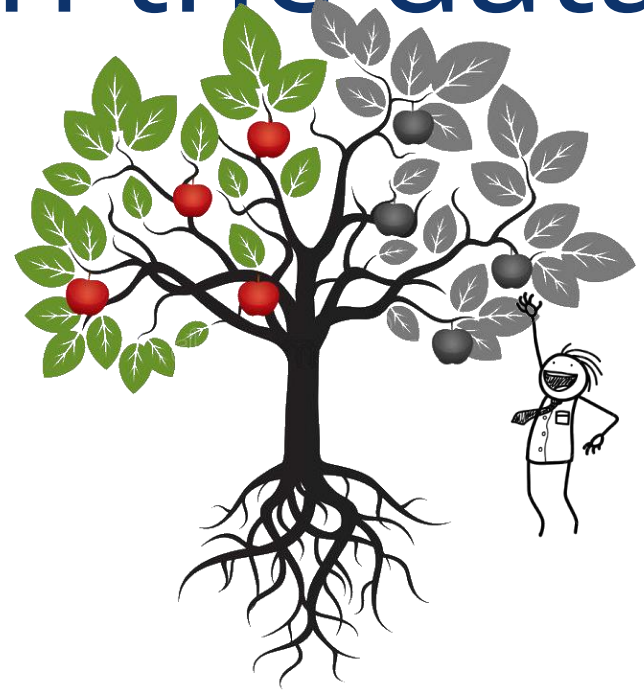
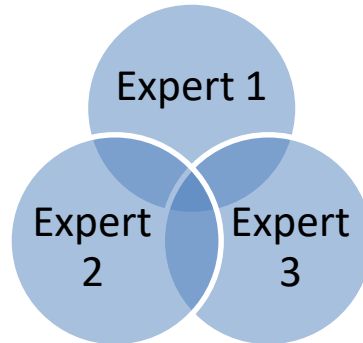
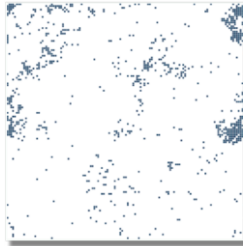
Current work on the data

Measuring interdisciplinarity

Paper level

Based on disciplinary diversity of citations

Making expertise calculable





Thank you

Questions and comments



For more questions, comments, and ideas, please get in touch in person or by email:

Sander.zwanenburg@otago.ac.nz